



ARIS Simulation™

Simulation, Analysis and Optimisation of E-Business Processes

Product Description

ARIS Simulation is the professional tool for the dynamic analysis of business processes. Since ARIS Simulation is fully integrated in the ARIS Toolset™ you can use the data relating to the processes, recorded in the ARIS Toolset, as a basis for the simulation of business processes. This simulation supplies information about the executability of processes, process weak points and resource bottlenecks. Based on the simulated process key performance indicators, you can evaluate different alternatives and perform a realistic benchmarking prior to making any cost-intensive process changes within the company.



Optimised Business Processes

Against a backdrop of increasing globalisation, growing competitive pressure and new trends, companies have to customise their business processes to the changing market conditions if they want to remain competitive. With this in mind, the following fundamental questions should always be asked regarding functioning business processes. Who does what and in what order? This brings us directly to a new question: Are my organisational decisions optimally aligned? It is not enough to just describe business processes. In order to be able to better judge the dynamic interplay between different processes, ARIS Simulation provides numerous analysis options. It allows you to realistically simulate business processes, so you can evaluate different alternatives prior to implementing those processes and thus derive the best solution upon which you can base your decision for organisational changes.

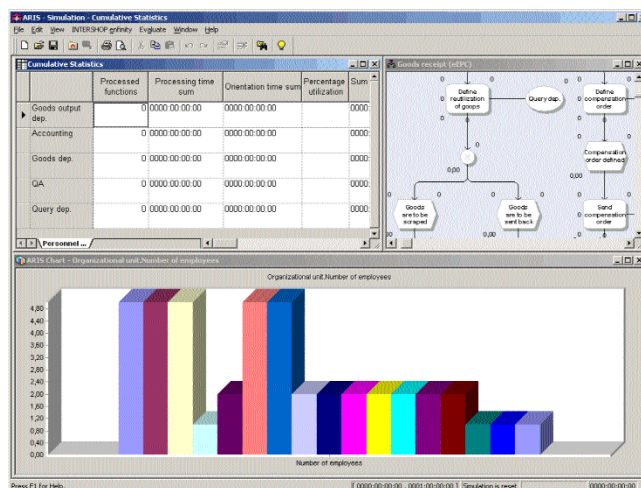
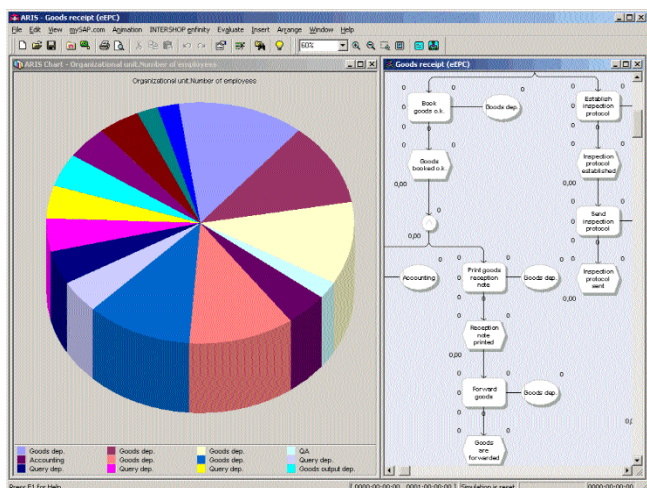
Integration of ARIS Products

ARIS Simulation is fully integrated in the ARIS Toolset. This means that processes already recorded in the ARIS Toolset can be used as a basis for simulations. The simulation of business processes helps answer numerous questions. Can my processes actually be executed? What are the throughput times of my processes and what is the utilisation of available resources? By answering these questions, you can reduce resources. This leads to an increase in the number of executable processes and as a result a decrease in

costs. In addition, key performance indicators created by ARIS Simulation can be reused as a basis for activity-based cost calculations in ARIS PCA™.

Methods and Functions

ARIS Simulation works based on all process models created with the ARIS method. While the control flow of business processes is documented in process models, the process instantiation models describe how processes actually fit with one another. The relationships between the personnel resources used for the simulation can be illustrated in organisational charts. To achieve a more realistic picture of the utilisation of personnel resources, you can define, in shift calendars, when the different resources are actually available. Many options are available to help evaluate the simulation. Within the process models themselves, there are direct analysis options such as object animation and attribute animation. Using object animation, you can immediately detect whether or not any process branches worked because of the optical changes of individual objects in the process model. Attribute animation provides detailed information about the status of individual objects, such as the number of executed functions at a particular time. Furthermore, it gives cumulative as well as detailed statistical information about different key data. These statistics can be displayed directly in the ARIS Toolset using current diagram types and can also be exported for further processing in MS Excel.



In addition, the development of several kinds of key data can be visualised over the simulation time period through the use of so-called probes. Comprehensive analysis options now make it possible to evaluate the quality of processes.

Areas of Application

With the realistic simulation of business processes companies can test and evaluate different alternatives before implementing their e-business processes. The best solution resulting from this serves as the basis for protecting organisational changes. ARIS Simulation can be used to benchmark process alternatives both within a department as well as between individual branches.

As a result, your company will profit from its "best" processes.

About IDS Scheer

IDS Scheer (Saarbruecken) is the leading supplier of solutions for business process management. With ARIS, the company has a complete portfolio with which big and well-known enterprises implement modern application concepts such as E-business, Supply Chain Management, Customer Relationship Management. IDS Scheer offers ARIS Toolset for process modelling, ARIS Process Performance Manager for process evaluation, ARIS Scouts for predefined process solutions (Quality Management, Risk Management, CRM, Redocumentation ...). With more than 37,000 licences, ARIS Toolset is the world's best selling tool for process optimization.

ARIS, ARIS 6 - Collaborative Suite, ARIS ABC, ARIS BSC, ARIS Easy Design, ARIS for Hyperwave, ARIS for INTERSHOP infinity, ARIS for mySAP, ARIS Integrator for Vitria, ARIS P2A, ARIS PCA, ARIS Process Cost Analyzer, ARIS PPM, ARIS Process Performance Manager, ARIS Simulation, ARIS Software, ARIS Toolset, ARIS Web Designer, ARIS Web Publisher, ARIS Process Risk Scout, ARIS Quality Management Scout, ARIS Redocumentation Scout, ARIS Scouts, Business Process Excellence and the IDS Scheer logo are trademarks of IDS Scheer AG. All other trademarks are the property of their respective owners.

Inventory number ASI0303-E-FS

Copyright IDS Scheer AG 03. 2003

Germany
International Headquarters
IDS Scheer AG
 Altenkesseler Straße 17
 66115 Saarbrücken
 Phone: +49 (0)681-210-0
 Fax: +49 (0)681-210-1000
 E-mail: ids@ids-scheer.de
<http://www.ids-scheer.com>

United Kingdom
IDS Scheer UK Limited
 Vienna House – Starley Way
 Birmingham
 B37 7HB
 Phone: +44 (0)121-767-1813
 Fax: +44 (0)121-767-1814
 E-mail: info@ids-scheer.co.uk
<http://www.ids-scheer.com>

North America
IDS Scheer Inc.
 1205 Westlakes Drive, Suite 270
 Berwyn
 PA 19312
 Phone: +1-610-854-6800
 Fax: +1-610-854-7382
 E-mail: ids@ids-scheer.com
<http://www.ids-scheer.com>

