

ARIS Toolset™

The Professional Tool for E-Business Engineering

Product Description

The ARIS Toolset and its add-on components enable the enterprise-wide and global definition and design of business processes as well as their analysis and optimisation. In the era of e-business, with this tool you can make quick decisions about the management of e-business processes. The ARIS Toolset provides realistic simulations of resource utilisation, activity-based cost calculations (e.g. for make-or-buy decisions), as well as web-based communication of modelled and optimised company processes.



Companies in Transition

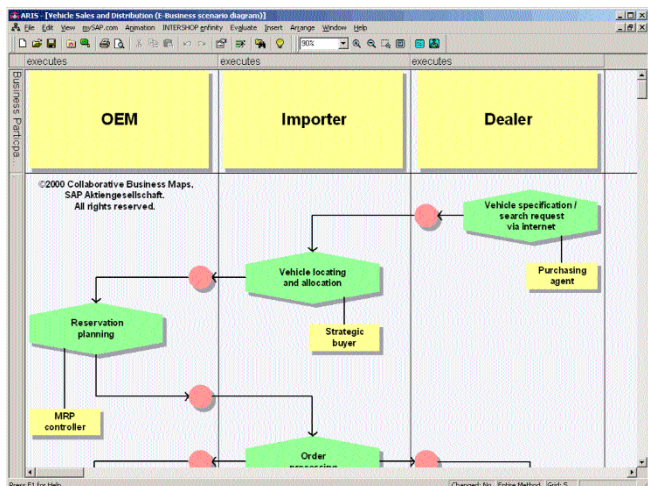
Companies must change. They have to do so in ever shorter cycles. The causes are well known: globalisation, competitive pressure, corporate mergers and trends such as e-business, e-commerce, business process optimisation and workflow, to name but a few. Many of these trends bring us to the same simple organisational questions: Who does what and in what order? Which services are provided? And which software systems should be used to provide them? The business models in ARIS Toolset provide users with a stable and proven basis for answering these questions.

Solutions for Companies

The ARIS Toolset and its optional add-on components offer an integrated approach for efficient business process management within companies. The ARIS Toolset is ideal for all those who are involved in projects that target business process improvement: from management through process owner to central administration departments and responsible personnel in the specialised departments. The ARIS Toolset application areas include business process definition, recording and their analysis, all the way up to optimisation and conversion of company processes.

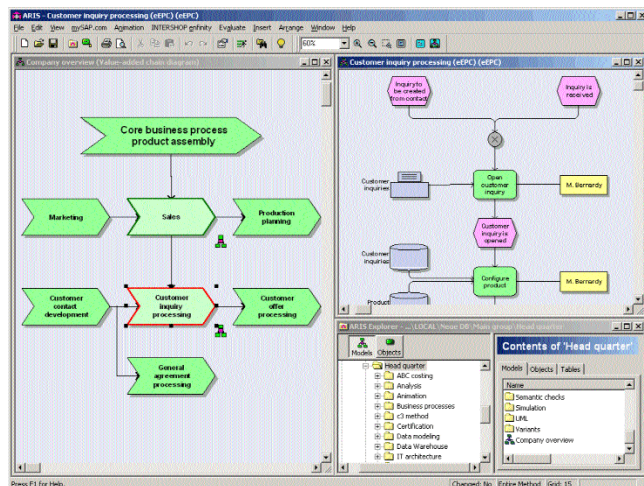
Database-Supported Process Optimisation

Knowledge about company processes is stored in the ARIS™ database while it appears graphically displayed on your screen, therefore consistency and reusability of data and models are ensured. Based on this, you can run realistic simulations of resource utilisation using ARIS Simulation™ and run activity-based cost calculations using ARIS PCA™. There are also numerous options for analyses based on key performance indicators and reporting. For enterprise-wide and global process communication, ARIS Web Publisher™ makes process models readily available to employees. ARIS for INTERSHOP infinity™ provides support for all skilled company employees in the planning, implementation and maintenance of process-oriented e-commerce systems. A particular highlight: The e-business concept modelling is followed by automatic system configuration. For the implementation of a Balanced Scorecard, ARIS BSC™ supports the documentation and analysis as well as the implementation and integration of all strategic objectives, critical factors, key data and measures for managing your company. Due to the transparency regarding cause-and-effect relationships between strategic objectives, the company strategy can be implemented and communicated uniformly across all company levels. ARIS for Hyperwave™ provides a structured approach for the software-supported configuration of your enterprise knowledge portal to maximize the efficiency of knowledge management. The structures are laid for users, roles, privileges and content as well as for the long-term, expandable knowledge logistics of your company portal, which decreases time to portal and avoids a glut of disorganized information.



Methods and Functions

For process design, the ARIS Toolset provides a large number of proven methods for modelling business processes. This allows you to easily customise ARIS™ to your individual needs. An important element in process models is the control flow, which describes the temporal order of function executions. Along with events and functions, organisational units, data objects, application systems and information carriers can also be modelled within the processes. Easy-to-use, yet powerful functions such as model generation, make your work faster and keep your results consistent. This results in the reduction of project costs. All OLE-capable multimedia objects can be easily linked in the graphic as additional information. Models can also be prepared both graphically and in text format. The full-screen mode and navigation options allow you to present your data in a comfortable way. In addition to numerous import and export options, ARIS provides an XML interface. ARIS also supports paperless certification according to many well-known standards. The savings potential alone regarding physical documents and the efficiency and speed with which process changes are implemented speak for themselves.



Areas of Application

The ARIS Toolset supports all tasks related to e-business engineering and business process management. The ARIS Toolset guarantees success for e-business, supply chain management and knowledge management when organisational forms require careful analysis and documentation as well as a redesign and optimisation of processes. ARIS Toolset also provides professional support for the creation of complete organisational manuals and internal benchmarks.

About IDS Scheer

IDS Scheer (Saarbruecken) is the leading supplier of solutions for business process management. With ARIS, the company has a complete portfolio with which big and well-known enterprises implement modern application concepts such as E-business, Supply Chain Management, Customer Relationship Management. IDS Scheer offers ARIS Toolset for process modelling, ARIS Process Performance Manager for process evaluation, ARIS Scouts for predefined process solutions (Quality Management, Risk Management, CRM, Redocumentation ...). With more than 37,000 licences, ARIS Toolset is the world's best selling tool for process optimization.

ARIS, ARIS 6 - Collaborative Suite, ARIS ABC, ARIS BSC, ARIS Easy Design, ARIS for Hyperwave, ARIS for INTERSHOP infinity, ARIS for mySAP, ARIS Integrator for Vitria, ARIS P2A, ARIS PCA, ARIS Process Cost Analyzer, ARIS PPM, ARIS Process Performance Manager, ARIS Simulation, ARIS Software, ARIS Toolset, ARIS Web Designer, ARIS Web Publisher, ARIS Process Risk Scout, ARIS Quality Management Scout, ARIS Redocumentation Scout, ARIS Scouts, Business Process Excellence and the IDS Scheer logo are trademarks of IDS Scheer AG. All other trademarks are the property of their respective owners.

Inventory number AT50303-E-FS

Copyright IDS Scheer AG 03. 2003

Germany
International Headquarters
IDS Scheer AG
 Altenkesseler Straße 17
 66115 Saarbrücken
 Phone: +49 (0)681-210-0
 Fax: +49 (0)681-210-1000
 E-mail: ids@ids-scheer.de
<http://www.ids-scheer.com>

United Kingdom
IDS Scheer UK Limited
 Vienna House – Starley Way
 Birmingham
 B37 7HB
 Phone: +44 (0)121-767-1813
 Fax: +44 (0)121-767-1814
 E-mail: info@ids-scheer.co.uk
<http://www.ids-scheer.com>

North America
IDS Scheer Inc.
 1205 Westlakes Drive, Suite 270
 Berwyn
 PA 19312
 Phone: +1-610-854-6800
 Fax: +1-610-854-7382
 E-mail: ids@ids-scheer.com
<http://www.ids-scheer.com>

